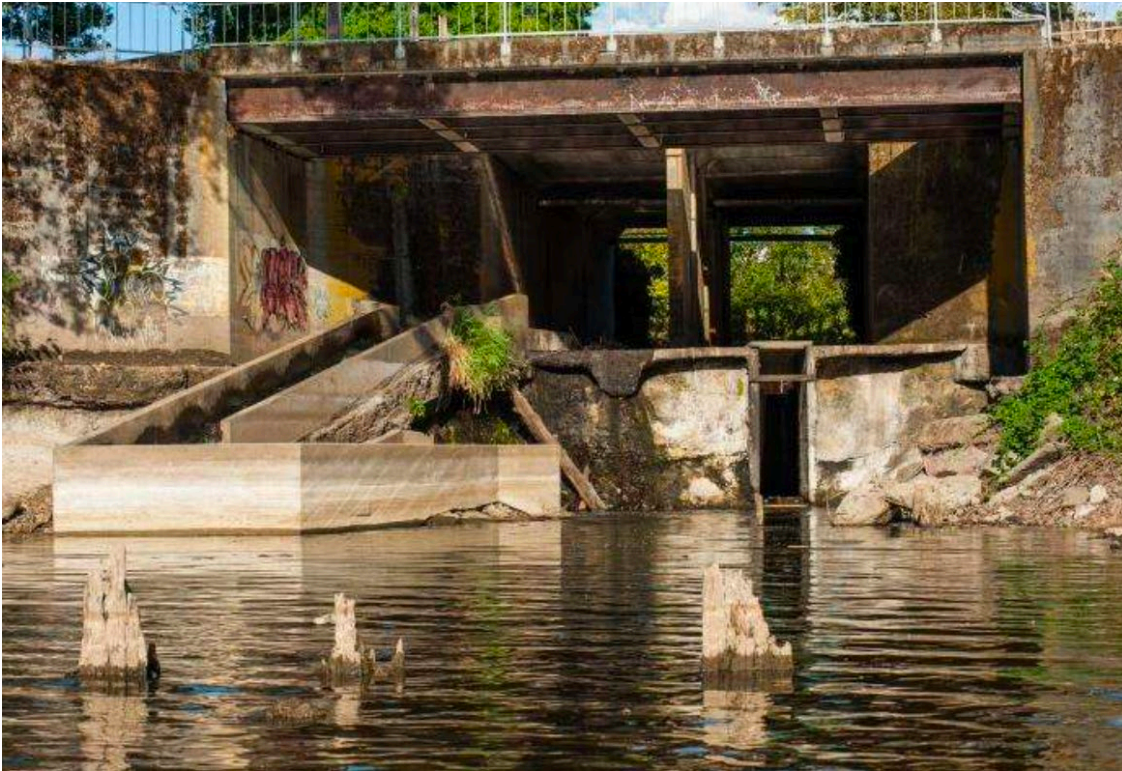


THE KELLOGG DAM

AN ENVIRONMENTAL JUSTICE EXAMPLE



Leslie King, MD, MPH, MEM, DTMH

Assistant Professor

Portland State, Oregon Tech

Commissioner

Oregon Department of Fish & Wildlife

Environmental Justice Definition

Environmental Protection Agency (EPA)

The fair treatment and meaningful involvement of all people regardless of race, color, national origin, or income with respect to the development, implementation, and enforcement of environmental laws, regulations, and policies. Fair treatment means that no population, due to policy or economic disempowerment, is forced to bear a disproportionate share of the negative human health or environmental impacts of pollution or environmental consequences resulting from industrial, municipal, and commercial operations or the execution of federal, state, local and tribal programs and policies.

Environmental
Justice Definition
(Simplified)

Once more...with editing

The **fair treatment and meaningful involvement** of all people regardless of race, color, national origin, or income with respect to the development, implementation, and enforcement of environmental laws, regulations, and policies

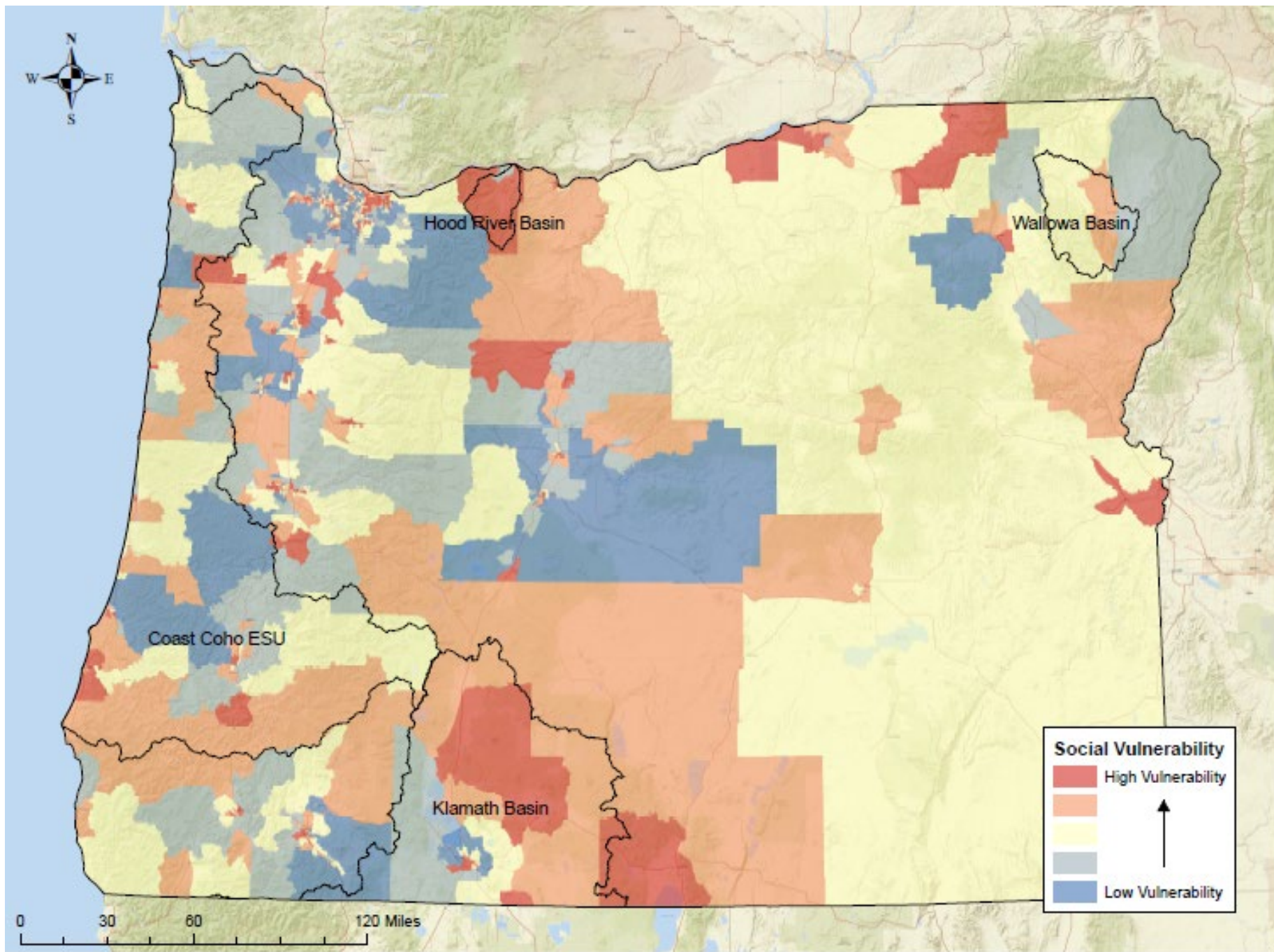
Facts:

>50% residents who live <2 miles from toxic waste facilities are POC

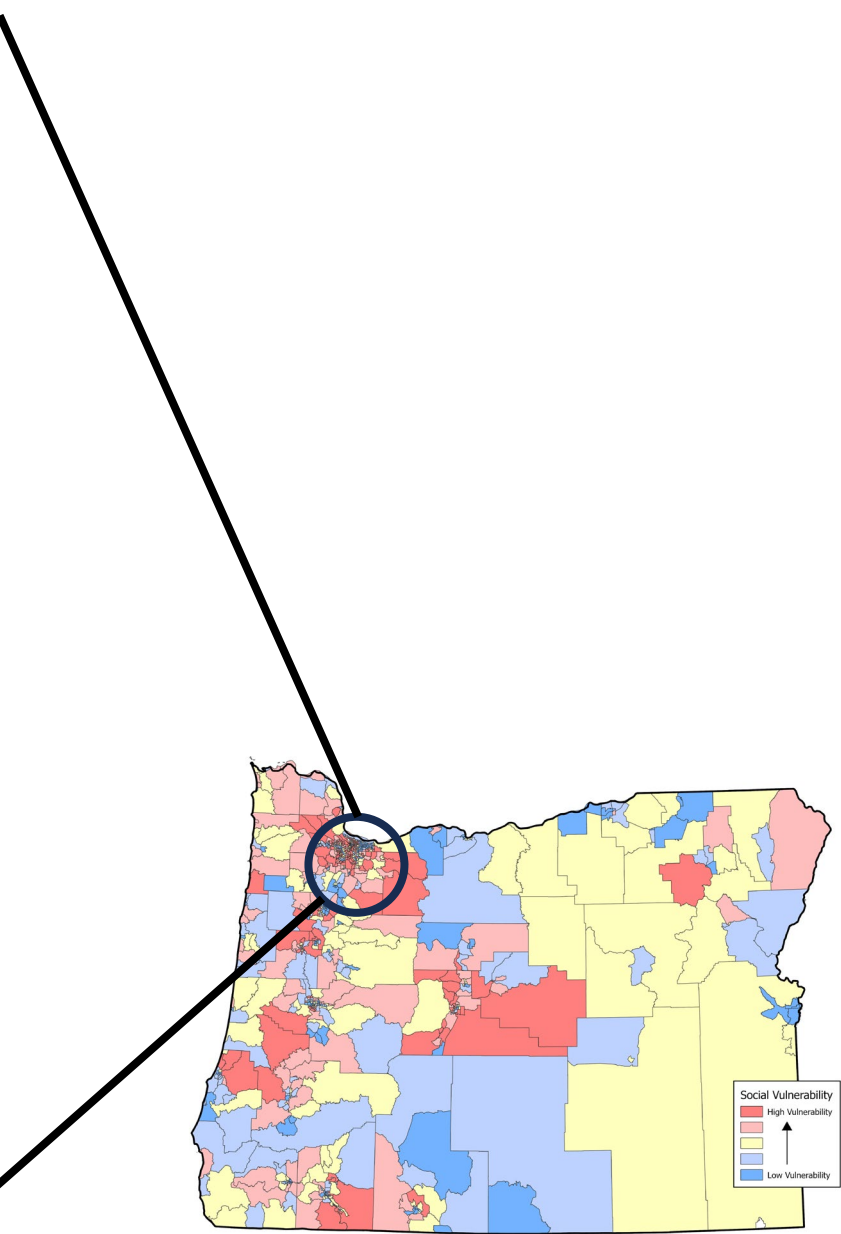
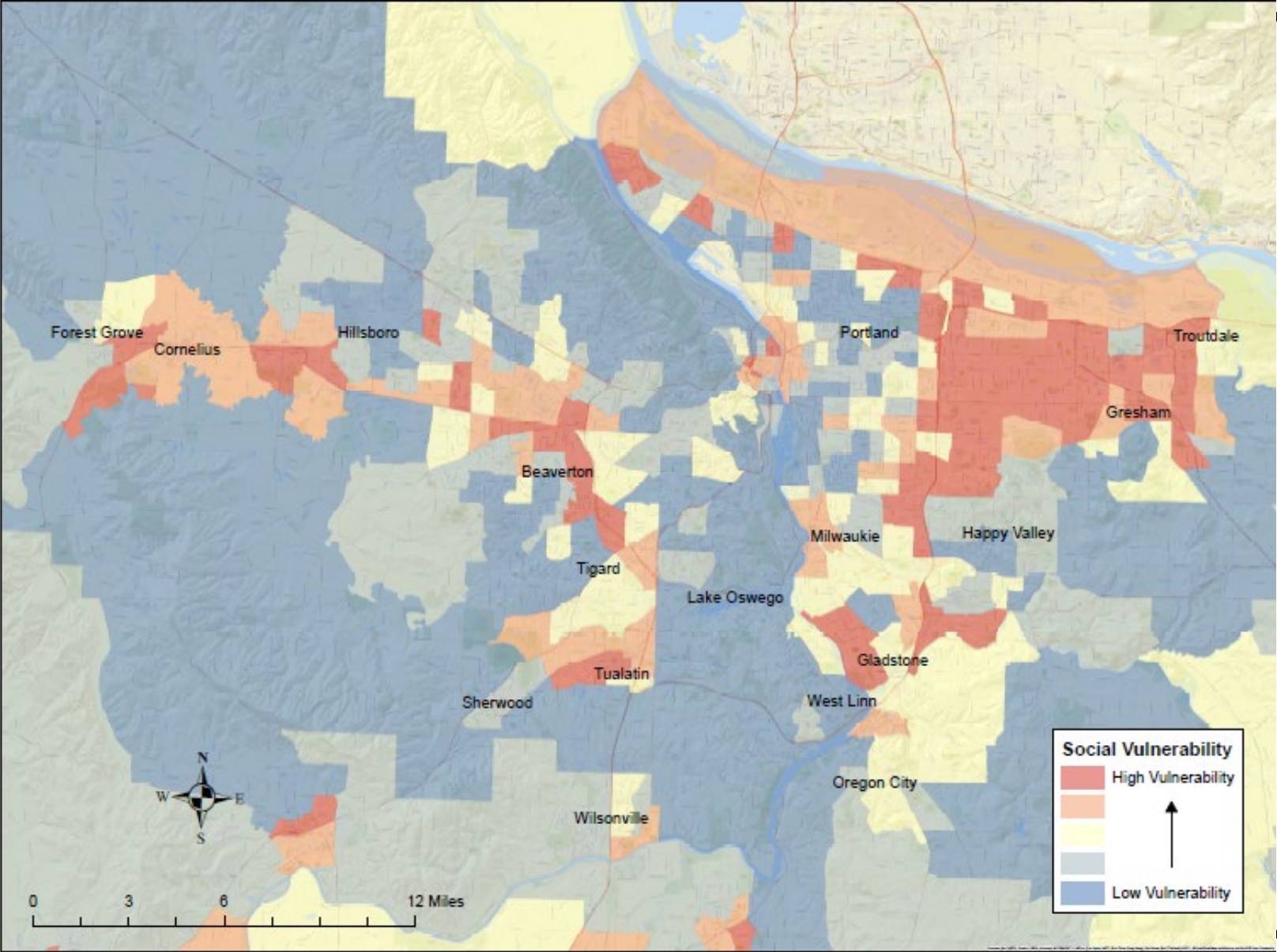
53% of people living within 3 miles of the worst polluting coal plants are POC

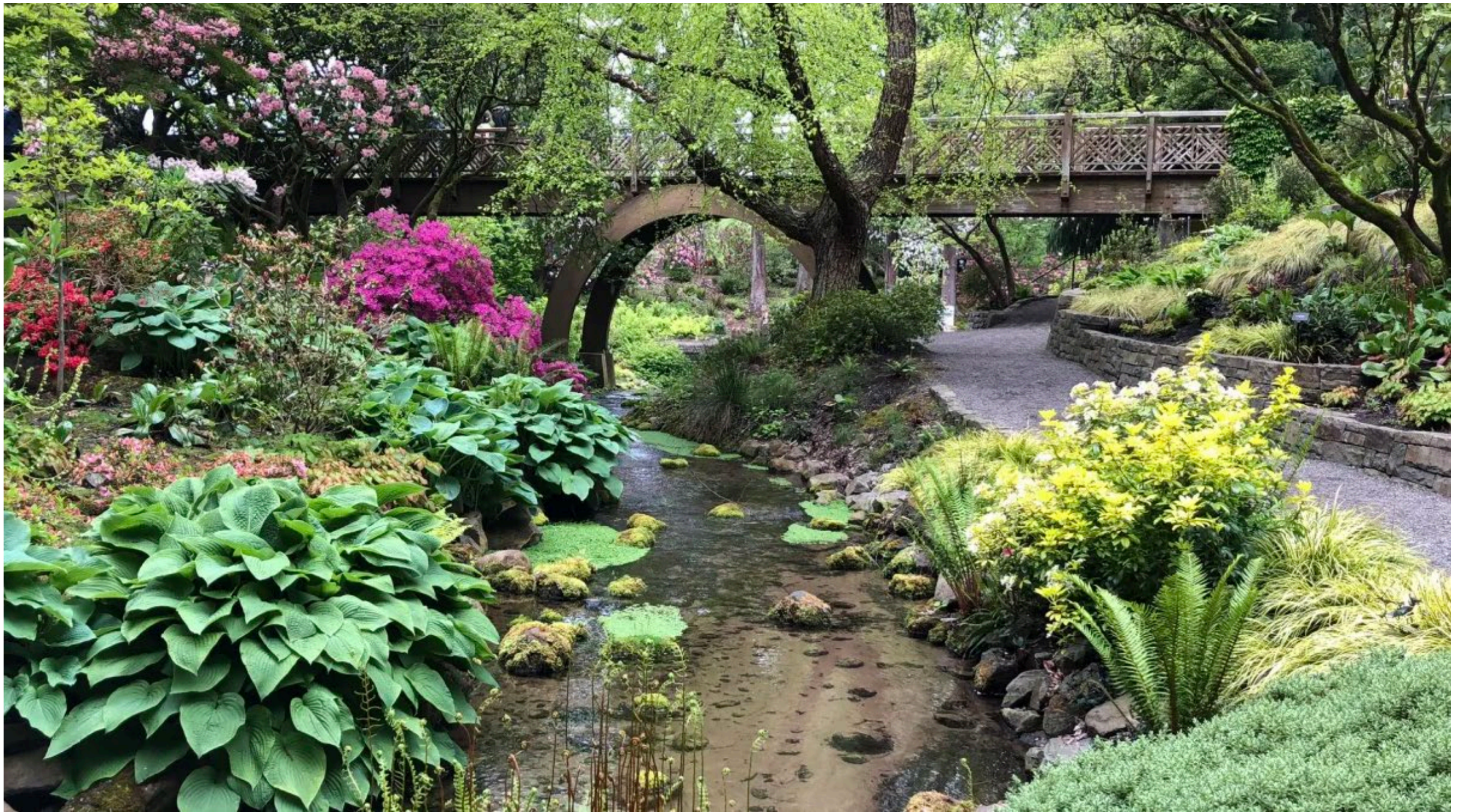
Communities below the poverty line have a 35% higher burden of particulate matter emissions compared to the overall population (54% for Black residents)

Black homeowners received \$8,000 less in grant aid after Katrina



Greater Portland Metro Area







Before Illinois was the
“Land of Lincoln”



Before the first shots of
The Civil War were fired
at Fort Sumpter, SC



Before the Northern
Shoshone territory
known as ogwa pe-on
(River of the West)
became Oregon, the 33rd
state



There was the Kellogg
Dam...



Kellogg Dam/99E Bridge History



(Above) Steamer "Lot Whitcomb", launched Christmas Day, 1850.
(Below) Standard Mill, built 1858, collapsed 1901.



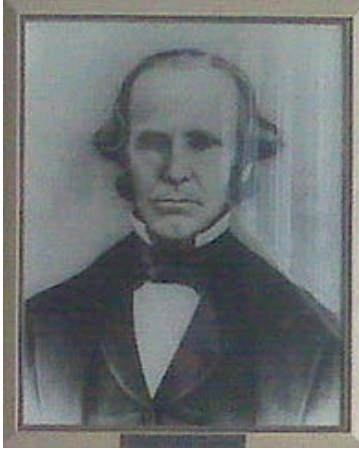
Dam/Lake – built 1848
Standard Mill – collapsed 1901
99E bridge – 1934
Fish ladder modified - 2003

Draining Due Kellogg Lake

Kellogg Lake in Milwaukie, a onetime millpond alongside McLoughlin Blvd., is being drained preparatory to cleaning it of debris accumulated over the years since it stored water for an early day flour mill.

The Lake was created by damming Kellogg Creek to form a millpond for the old Standard Flour Co., mill, one of the enterprises of Lot Whitcomb.

Whitcomb, known in Oregon history as the builder of the first steamship in Oregon, milled grain at the old mill into flour for sale at bonanza prices to miners in the diggings in California.

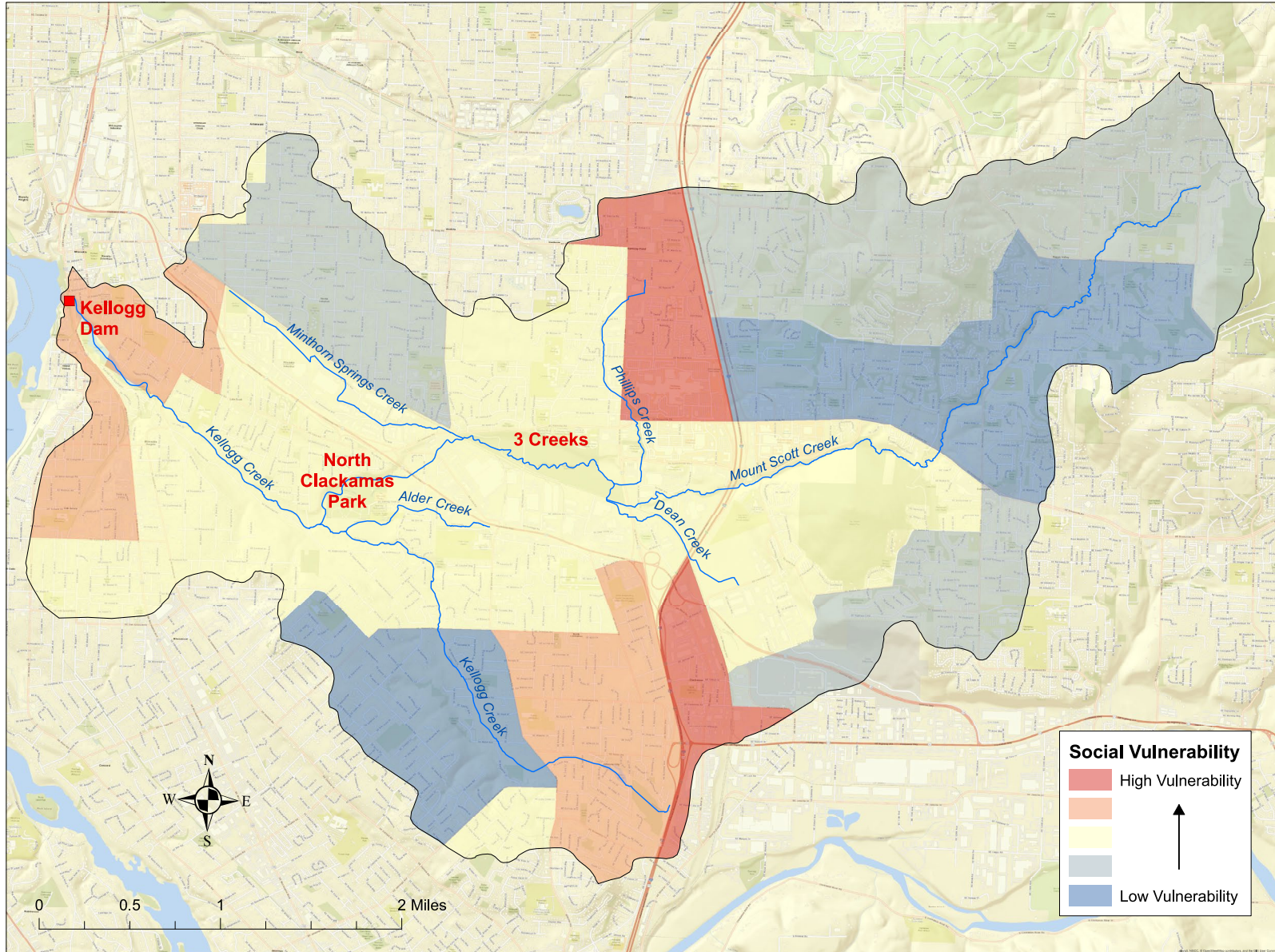


Project Context









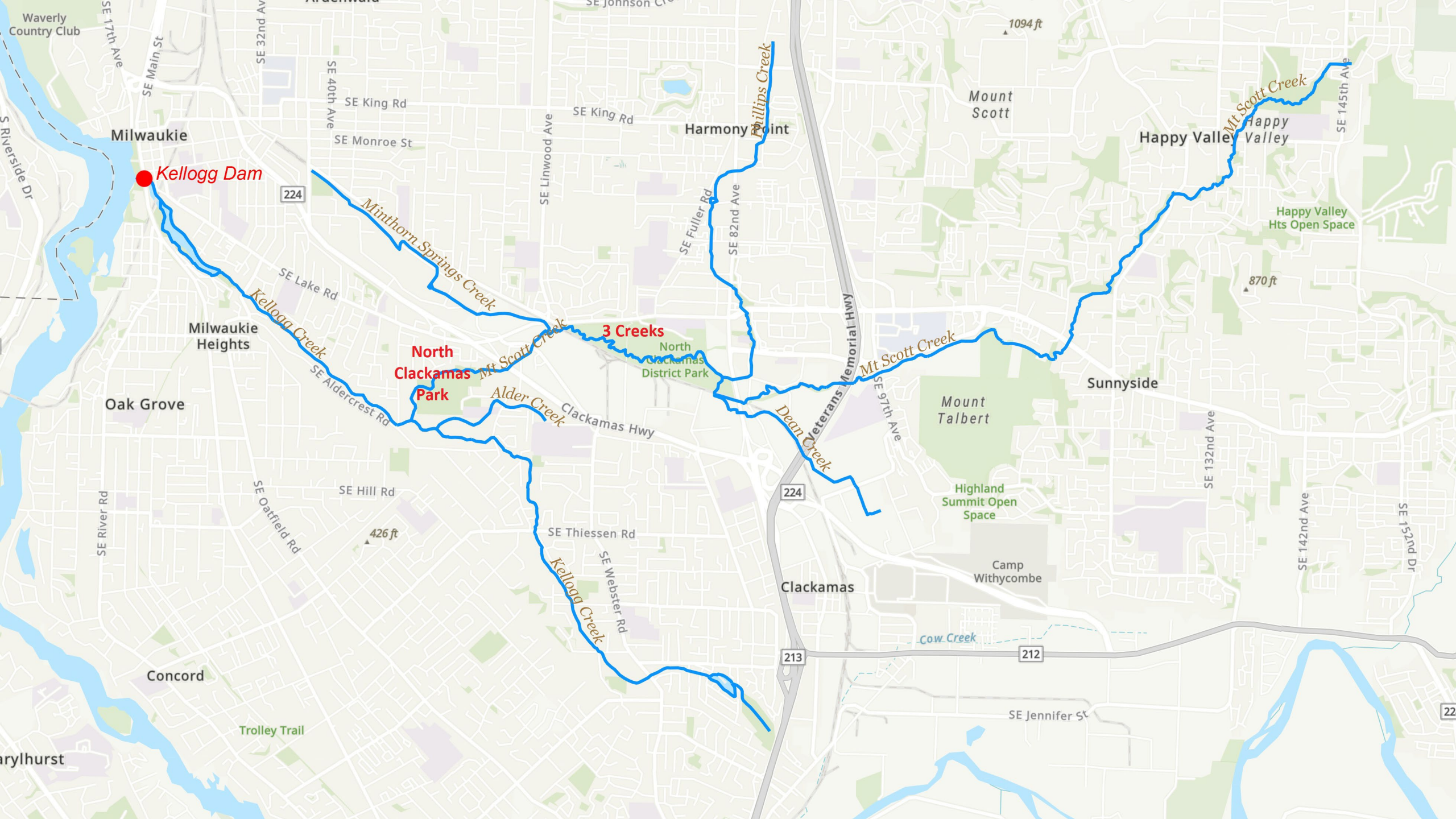
Milwaukie The Kellogg Dam



RATHER TYPICAL WATERSHED SPEAK...

- Near total **anadromy** barrier
- Restoration of 14.5 habitat acres
- Regional trail connections
- Highway bridge improvements
- Increased floodway capacity
- Climate resiliency





Kellogg Dam

3 Creeks
North Clackamas Park

Harmony Point

Happy Valley

Clackamas

Mount Talbert

Highland Summit Open Space

Camp Withycombe

Cow Creek

Concord

Trolley Trail

Mount Scott

Happy Valley Hts Open Space

Sunnyside

SE Jennifer St

Waverly Country Club

North Clackamas District Park

Oak Grove

Milwaukie Heights

Arlyhurst

NEW SOCIAL/ENVIRONMENTAL JUSTICE SPEAK...



- Strong community support
- Equity focus area
- Proximity to Milwaukee HS:
 - 50% BIPOC
 - 60% Free or Discounted Lunch
 - Living laboratory – student monitoring
- Workforce development
- Community partnerships
- Paid underserved community member participation



HELLBOY **FIGHT CLUB 2**
eight™ *Lady Killer* HARROW COUNTY™ **MIND MGMT**

THE MASSIVE

PROMETHEUS

HALO

TOMB RAIDER

DRAGON AGE

SIN CITY



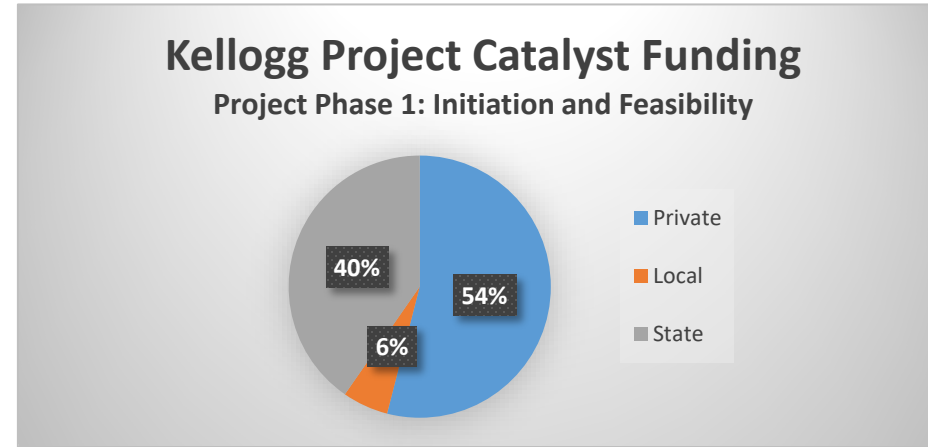
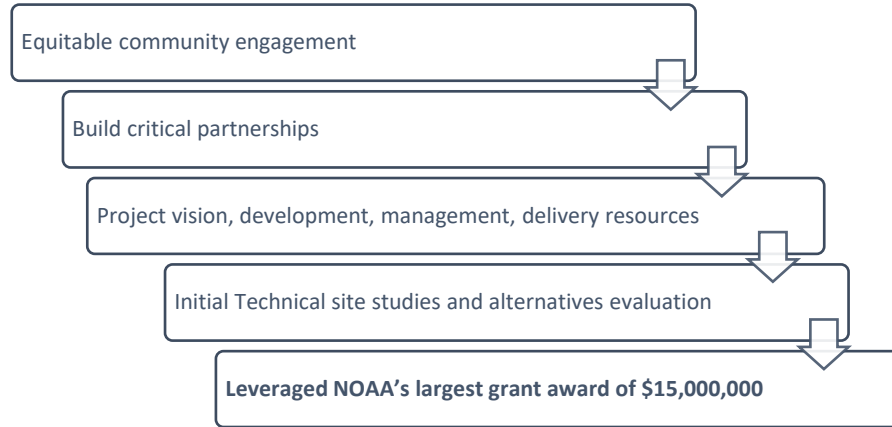




The Infrastructure Investment and Jobs Act has over 11 billion dollars to invest in creating healthy natural areas that support our wildlife, recreation, and economy. This is a once in a lifetime opportunity for conservation and communities in Oregon.

Project Funding

- Private, Local, State Funding



- Federal

- ✓ Critical to complete complex multi-benefit projects with diverse benefits
- ✓ \$100M needed to complete Kellogg Project

Kellogg Creek Watershed

- Justice 40 initiative
- Census Tract 208 Kellogg Dam
 - Environmental Burden Rank-Impaired Surface Water, Hazardous Site, transportation.
- Clackamas Tract# 41005022108
 - Low Income Burden

