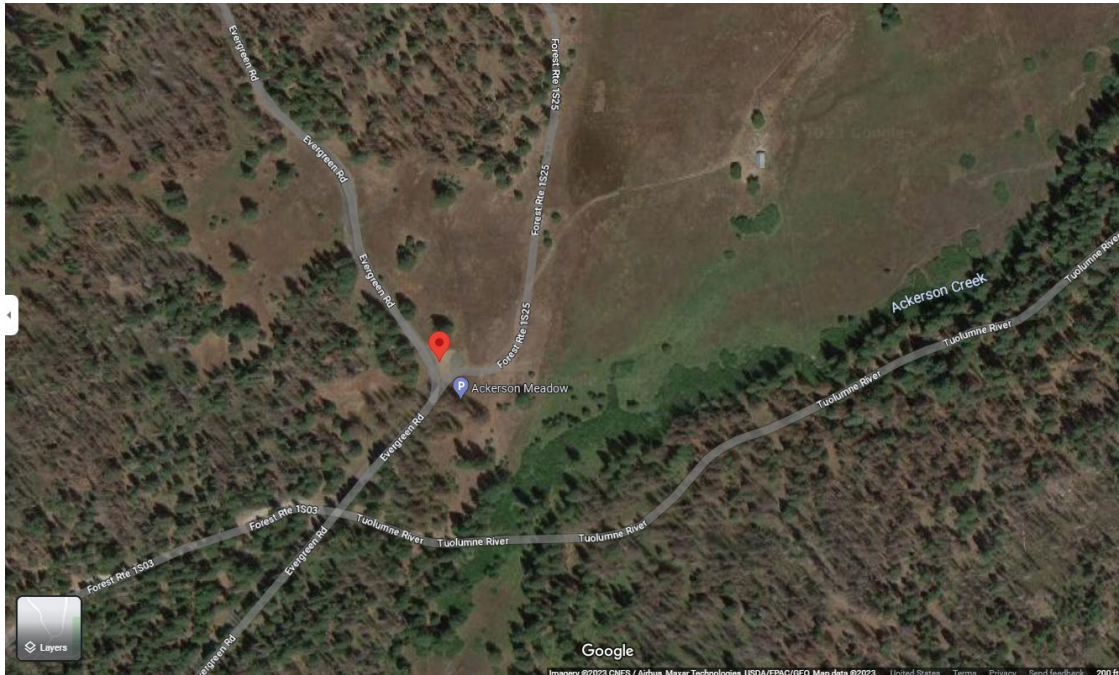


Attachment G: Directions to Pre-Proposal Tour and Project Vicinity Map

- **Google Map Pin of Meeting Location:** <https://goo.gl/maps/1J9eL2Z1RX4wqCwm9>
- **Directions from Groveland, CA:**
 - Travel east on CA-120 E/Main Street toward Yosemite National Park for 23 miles
 - Turn left on Evergreen Road and travel 3.1 miles. Stay on paved road until you reach Ackerson Meadow pullout off Evergreen Road.
 - Park in pullout on right hand side of Evergreen Road or in nearby pullouts as space allows.
- **Aerial Image of Meeting Location:**



- **Street View of Meeting Location:**



Ackerson and South Ackerson Meadow

Yosemite National Park
California

National Park Service
U.S. Department of the Interior

