

Equitable Urban Planning for Resilient Communities

An aerial photograph showing a complex multi-level highway interchange with several overpasses and ramps. To the right of the interchange is a large parking lot filled with cars, and a baseball field is visible in the lower center. The surrounding area includes various buildings, parking lots, and green spaces.

River Rally 2017
Grand Rapids, MI
5/11/17



Intrenchment Creek

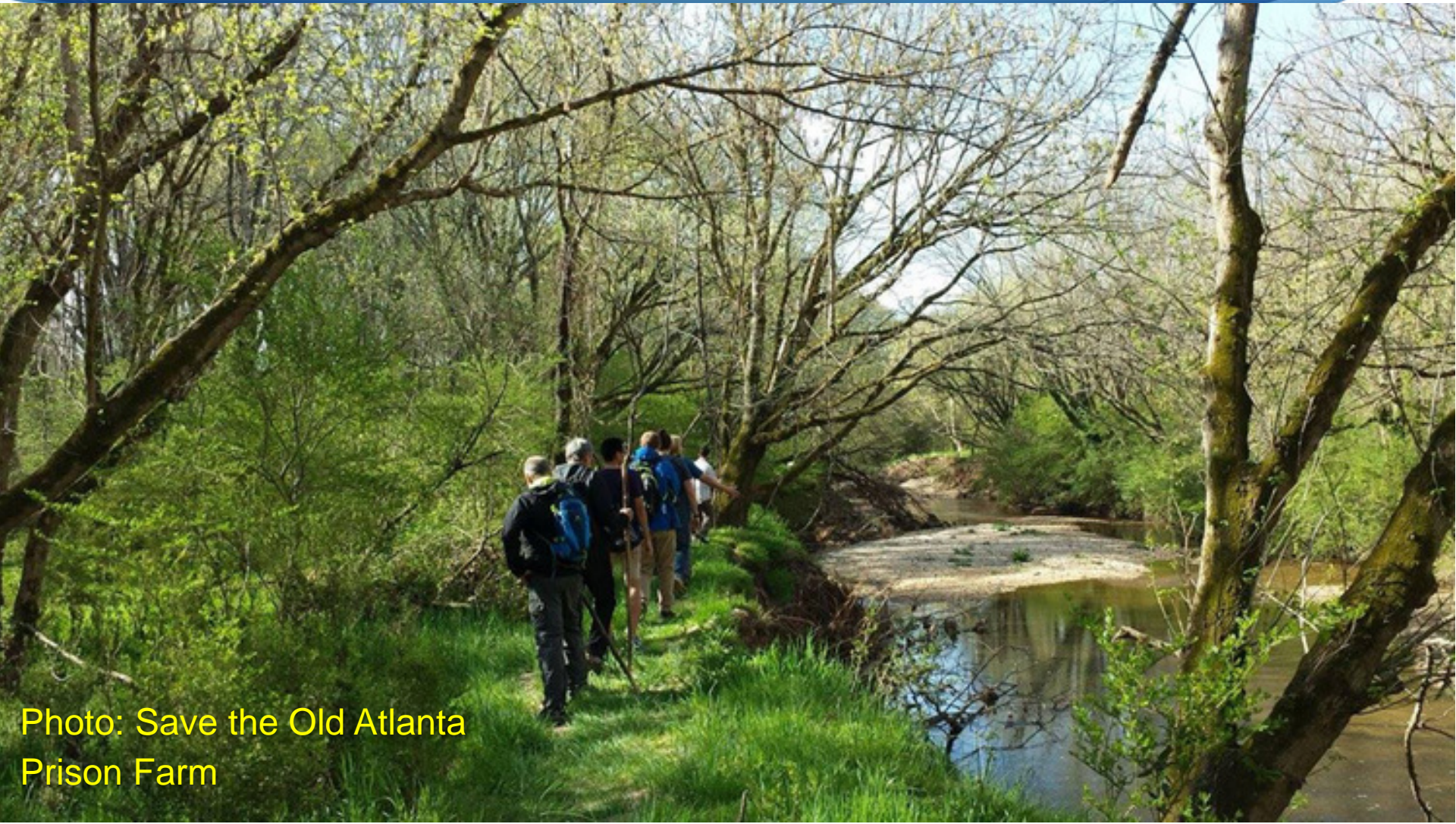



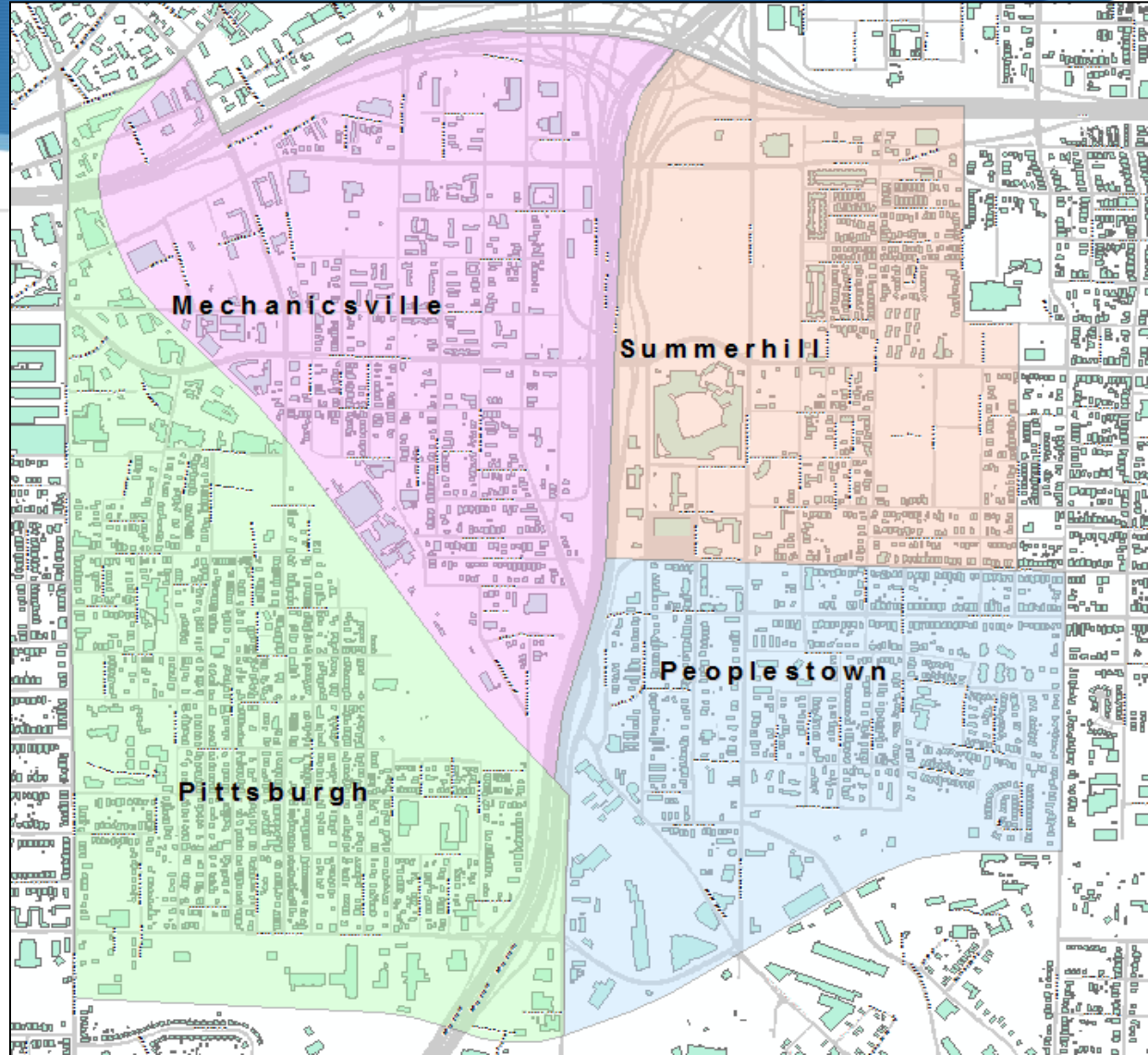


Photo: Save the Old Atlanta
Prison Farm



Turner Field Neighborhoods

-  -Interstate Focal Area
-  -Custer Combined Sewer Basin
-  -LCI Boundary





The Evolution of a Neighborhood

1949



2013

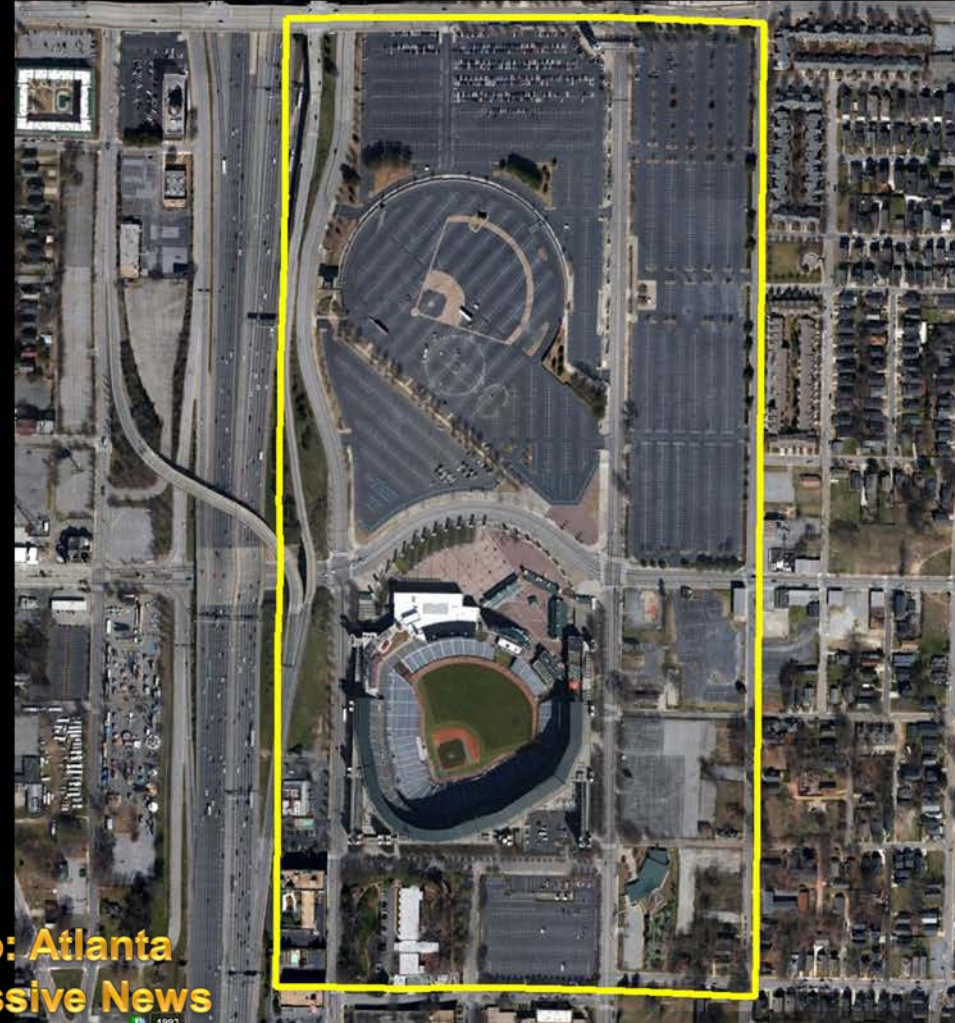


Photo: Atlanta
Progressive News



Flooding In Southeast Atlanta



Photo: Matt Keller 12/24/15

org
own.org



TFCBC Survey

1,000 residents surveyed, the top answers to the question, “The New Development Should...” were:

1. Manage Stormwater
2. Serve the Surrounding Neighborhoods
3. Blend in with the Community
4. Be Environmentally Friendly
5. Create More Job Opportunities
6. Include Public Parks/Green Space

Green infrastructure helps address all of these.



CBA Recommendations: Stormwater and Green Infrastructure

- Manage first 1.8” of rainfall with green stormwater infrastructure
- Work with GDOT to reduce highway stormwater runoff on redevelopment site and downstream communities
- Developer will manage 100-year rain event on the Project site





A Green Vision for Atlanta





Stadium Neighborhoods Livable Centers Initiative

- Focus on ‘bricks and mortar’ aspect of redevelopment
- American Rivers volunteered to provide stormwater assessment and recommendations
- Not your typical LCI





LCI: Community Flood Mapping

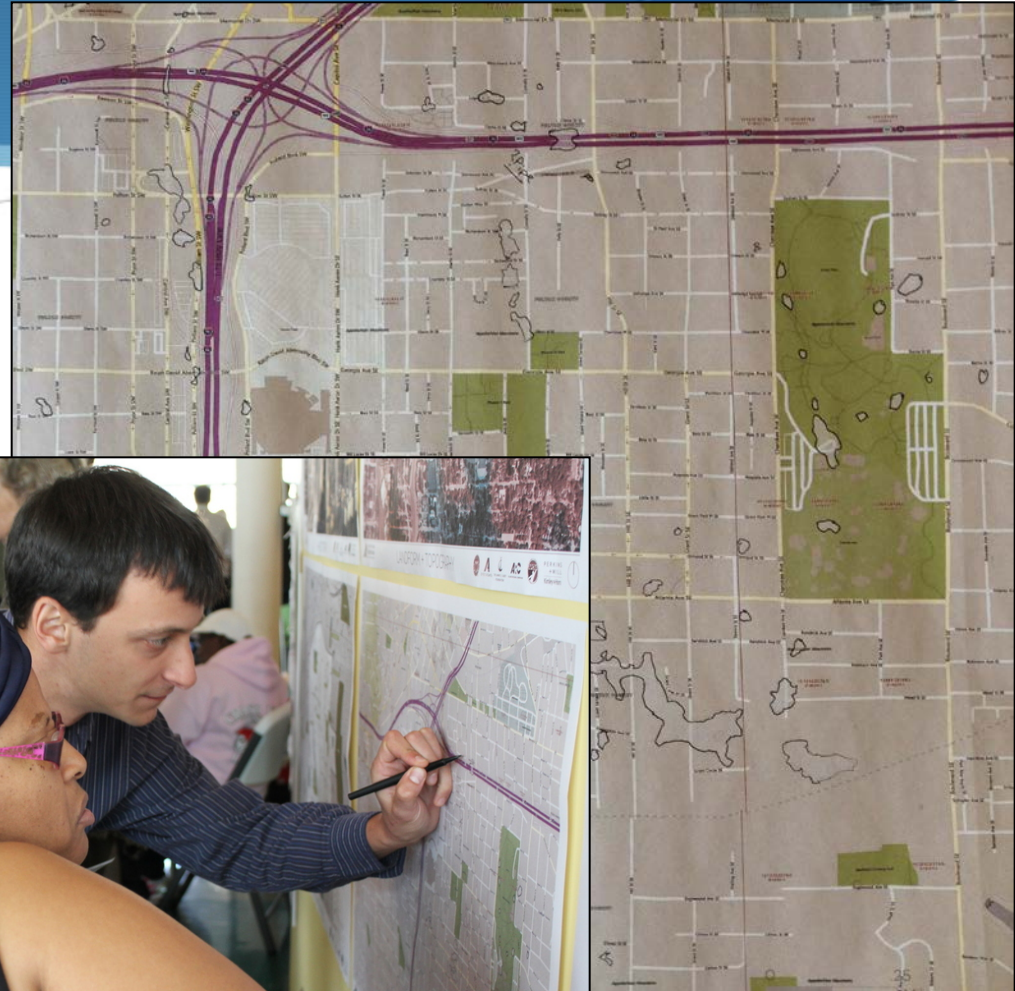
SOUTHEAST ATLANTA GREEN INFRASTRUCTURE INITIATIVE
REASON FOR PERMEABLE PAVERS



THIS MAP IS PROVIDED AS A PUBLIC SERVICE. The City of Atlanta has made every effort to ensure that these data contain correct names and measurements. The City of Atlanta is not responsible for any errors or omissions in this map product. The user of this data and/or map products assumes all risks and liabilities which may arise from the information provided. All maps or data furnished to the user by the City of Atlanta.



City of Atlanta
Department of
Watershed Management



**Photo: Stadium
Neighborhoods LCI**



LCI Recommendations: Stormwater and Green Infrastructure

- Manage first 1.8” of rainfall with green stormwater infrastructure
- Keep water out of the combined sewer
- Ability to capture 3.6 million gallons per storm





LCI: Core Area Feasibility Assessment

Core Area—70 acres

- Harvest rainwater from all buildings
- Build new roads with permeable pavement
- Retrofit existing roads with bioretention
- Include bioretention in all parks

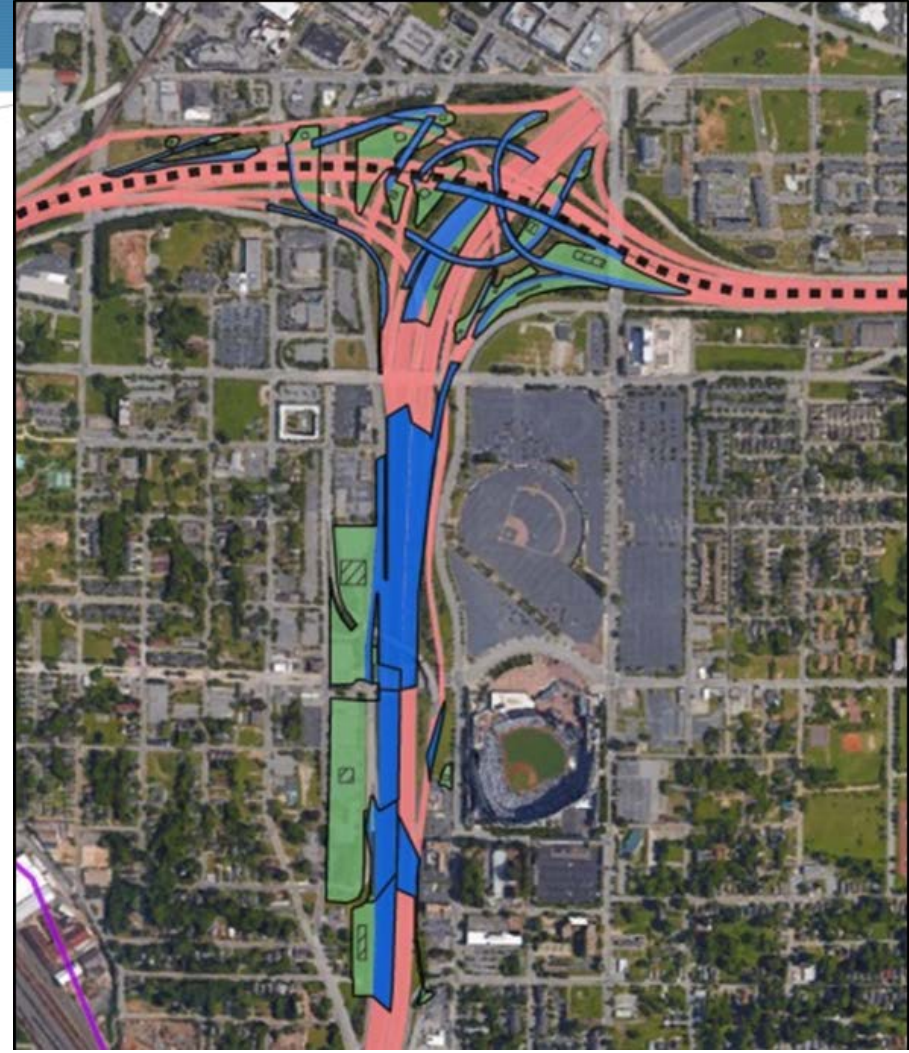




LCI: Interstate Feasibility Assessment

Interstate—30 acres

- Matched up interstate areas with nearby low-lying green space
- Using bioretention wherever possible
- Potential to manage stormwater from 1/3 of the interstate surface within the study area



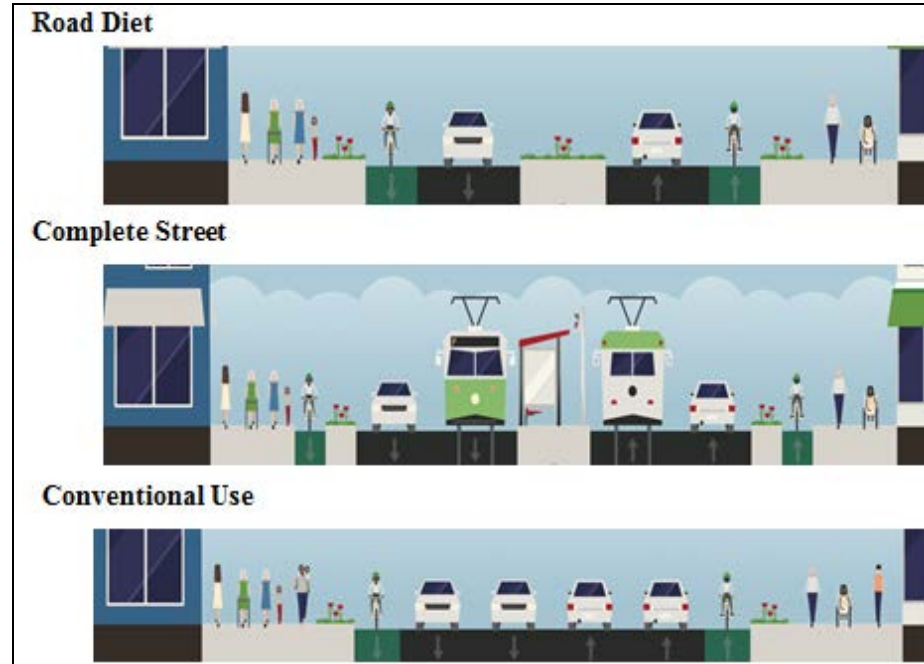


Post-LCI: Next Steps

GDOT Pilot Project



Green Street Design





ECO-Action

Mission

Promote a safe and healthy environment by helping Georgia communities organize to address environmental health threats





Watershed Advocacy Training for Empowered and Resilient (WATER) Communities

- 💧 **Purpose** –Grow a cohort of advocates committed to realizing the vision of the Livable Centers Initiative.
- 💧 **Structure** –Safe, flexible, and guided to facilitate learning from within.





WATER Communities

💧 **Content**

- 💧 Stormwater, Flooding, Green Infrastructure, Community Organizing, Influencing Authority, Environmental Justice, Communication, Education, and Bringing it together for Action

💧 **Process**

- 💧 NKM to maximize participation
- 💧 MASK to reinforce reflection and listening
- 💧 Pre/Post Test and Interview



Graduation and Celebration





Atlanta Watershed Learning Network

- ◆ Peer Exchange between Proctor Creek and Intrenchment Creek communities
- ◆ Partnering with non-profits, academics, and City of Atlanta
- ◆ Advocates will develop their own green infrastructure projects





Results in Review

- GDOT pilot project
- Georgia Tech green street design
- Atlanta Watershed Learning Network
- Advocates meeting with developer
- Jason Dozier running for City Council
- Advocates' presentations to City Council
- Extensive media coverage
- Newsletter

GREEN INFRASTRUCTURE: NOW, FOREVER, AND ALWAYS

Issue 3



ADVOCATING FOR GREEN INFRASTRUCTURE ACROSS THE TURNER FIELD COMMUNITIES

Green
Infrastructure:
Now, Forever,
and Always

Advocates Learn about GSI

by Jason S. Dozier

Advocates learned that Green Infrastructure advocacy can take on different forms, depending on the needs of the communities or the institutions that look to work with those same communities. Advocates learned that green infrastructure is a water management technique that seeks to protect, restore, and mimic the natural water cycle. This can range anywhere from planting trees and restoring wetlands, to building green roofs and rain gardens. Green Stormwater Infrastructure (GSI) seeks to specify the green infrastructure language, because of its specific focus on planned landscapes in mitigating stormwater flooding occurring because of heavy rainfalls. Retention ponds, bioswales, permeable pavers, and rain barrels are common ways to

methods can be articulated clearly through a comprehensive media strategy. Important keys to remember when writing and speaking are to ensure that advocates effectively address their audiences, identifying ways that they may positively react or respond to what is said, and address concerns or issues within the presentation itself. By appealing to the interests of these audiences, advocates can better work to change their viewpoints.

Students read Paul DeMerritt's "Earth to Atlanta" article that was published in Creative Loafing. Mr. DeMerritt spoke with the group and the advocates discussed the reality that climate change is causing more frequent flooding events, even if they're not

The advocates learned that flooding negatively impacts property, public health, and quality of life because it can quickly overwhelm the combined overflow system that's nearly a century old. Not only does water flood properties that are deep into the watershed, but the overwhelmed sewers cause human waste to rise to the top, negatively affecting public health and significantly impacting quality of life.

VALLIATION TOOL - Center for Neighborhood Technology & American Rivers





Continued Advocacy and Engagement



Jason Dozier

▶ GREEN INFRASTRUCTURE ADVOCATE

2 6:34 40°
wsbtv.com

@wsbtv 3/13/17

Questions?



American Rivers
Rivers Connect Us®

Group Discussion





Group Discussion Questions

- 1) What other information does your group need to address issues of equity? Who might have this information?
- 2) How do you ensure that various stakeholders stay focused on the prize, regardless of individual differences?
- 3) How does your group define success? How might it be measured?



Bringing it Together for Action

- Based on this workshop experience, list 1-2 things that you will follow-up upon when you get home, or 1-2 new questions that you'd like to find an answer to.
- We will follow up with you in three months to check on your progress.
- Or feel free to contact us:
 - Jeremy Diner—jdiner@americanrivers.org
 - Yomi Noibi—yomi@eco-act.org
 - Jason Dozier—jason.s.dozier@gmail.com