

The logo is a blue water droplet shape. Inside the droplet, the letters 'ASFP' are prominently displayed in a stylized font. The full name 'ASSOCIATION OF STATE FLOODPLAIN MANAGERS' is written in a smaller font around the perimeter of the droplet.

Association of State
Floodplain Managers

SUSTAINABLE STRATEGIES TO MANAGE FLOODS

Sam Riley Medlock, J.D., CFM
Association of State Floodplain Managers
August 23, 2009



Briefing Overview

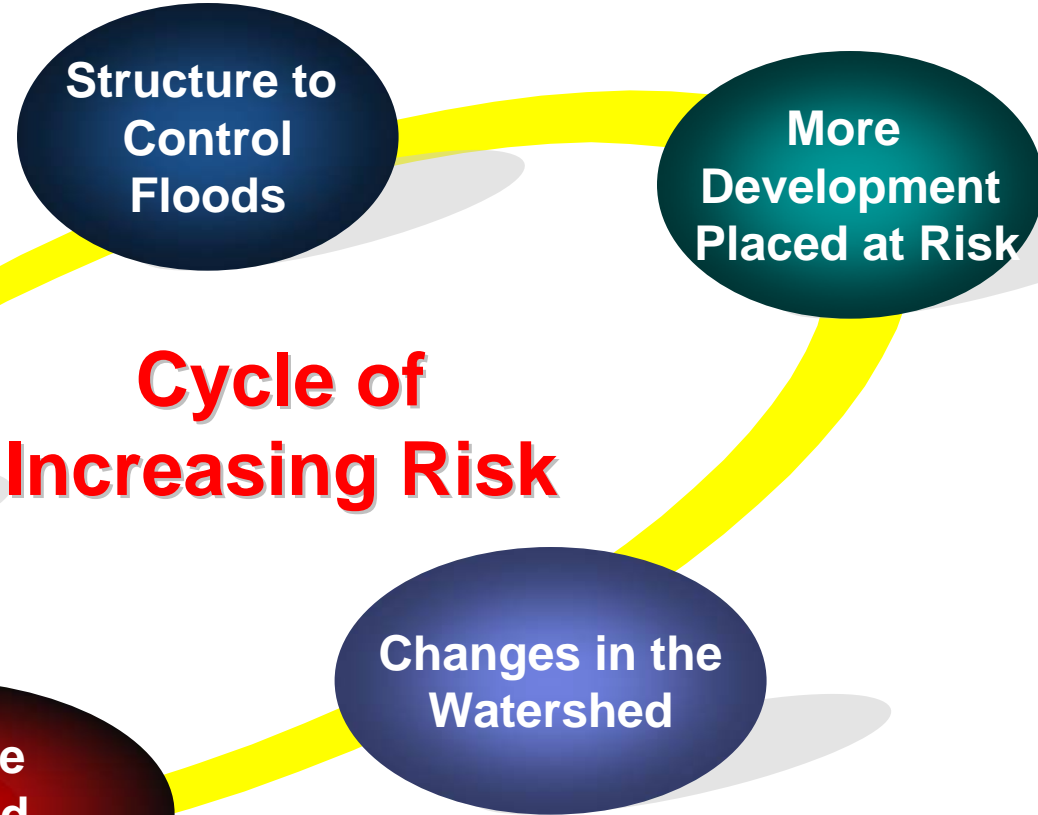
**Background:
How Did We Get Here?**

Strategies that Work

**Conclusion:
Preparing the Nation**



Cycle of Increasing Risks



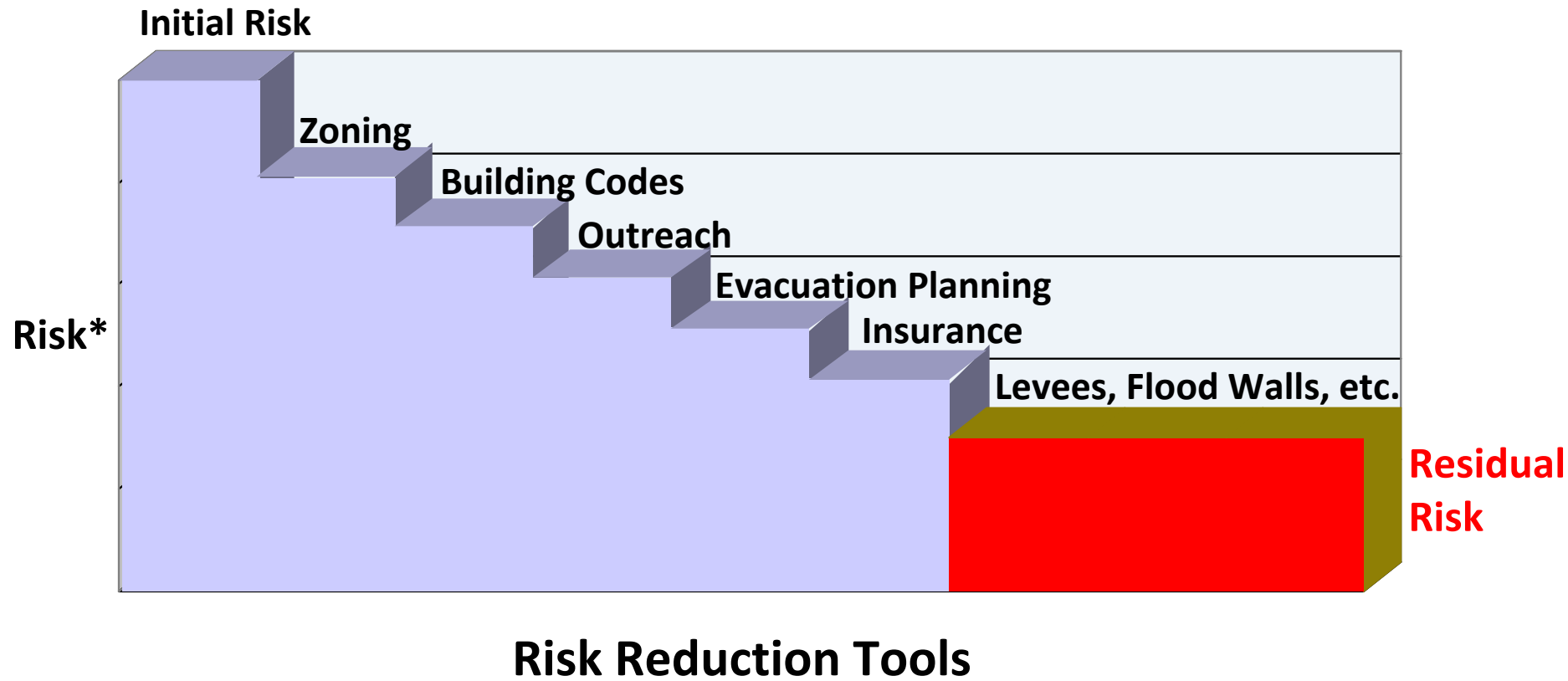
Cycle of Increasing Risk

- Deterioration
- Maintenance Issues

- Loss of natural functions & services
- Increased runoff
- Changing climate



Flood Risk Management: Buying Down Risk, One Step at a Time



* Risk = Probability x Consequences



Contributing Factors

Federal Policies

- NFIP & the 100-Year Standard
- Emphasis on structural approaches
- Disaster relief environment

States & Communities

- Control land use for short-term benefits
- Perceive flooding to be a federal problem
- Externalize the costs & consequences

Public

- Unaware of – or unwilling to accept - residual risk
- Misplaced concern about having to obtain flood insurance

Floodplain Management 2050

- Drivers
 - Population
 - Settlements
 - Culture
 - Policy





Policy Adjustments

- Manage resources and plan on a watershed basis;
- Integrate plans and activities to reflect all hazards, to identify actions with multiple benefit;
- Permanently restore and preserve flood-prone areas as open space, through land acquisition; and
- Anticipate future development and site critical facilities out of harm's way.





Case Studies: Strategies That Work

- Seattle / King County, Washington
- Upper Trinity River, Texas
- Charlotte-Mecklenburg County, North Carolina
- Charles River, Massachusetts





Case Study: Seattle - King County, WA

King County Climate Plan

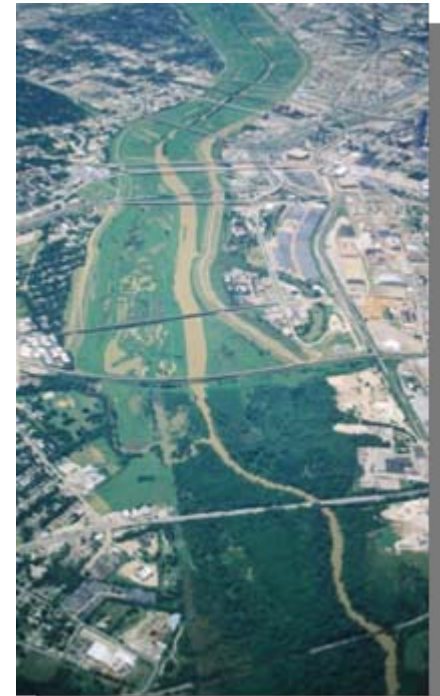
- Reducing greenhouse gas emissions – “mitigation”
- Preparing for the physical impacts of climate change – “adaptation”
 - Land Use Planning
 - Transferable Development Rights (TDRs)





Case Study: Upper Trinity River, Texas

- Cities of Dallas, Fort Worth, Arlington + 9 others
- Common development criteria to reduce flood risk, improve water quality
- Integrated Storm Water Management
- River & Floodplain Restoration
- Habitat Enhancement & Protection





Case Study: Charlotte-Mecklenburg, NC

- Water Quality Buffers
- Mapping & Acquisition of Floodprone Areas
- Stream Restoration
- Affordable Housing on Higher Ground





Case Study: Charles River, MA

- Wetlands Restoration & Preservation
- USACE acquisition of 3200 acres and easements on 4800 acres
- 75% of existing wetlands = protected
- Prevents \$40 million in flood damage each year
- Contribute \$90 million to local economy each year





Summary & Conclusion

- Nation cannot afford to “hit the snooze”
- Communities are leading the way, but need Federal support
- ASFPM and allied organizations stand ready to help

**Association of State
Floodplain Managers**

